

Exam : Cisco 642-964

**Title : Cisco Data Center
Networking Infrastructure
Support**

Version : Demo

Important Note, Please Read Carefully

Other Pass4Side products

[All Pass4Side IT Exam Products](#)

Pass4Side Popular Certifications:

[Cisco Certifications](#)

[CCNA](#) | [CCDA](#) | [CCNP](#) | [CCIE](#) | [CCIP](#) | [CCVP](#) | [CCDP](#) | [CCSP](#) | [IP Communication](#)

[IBM Certifications](#)

[Advanced Deployment Professional](#) | [Certified Administrator](#) | [Certified Enterprise Developer](#) | [DB2](#) | [Certified Specialist](#) | [eserver Certified Specialist](#) | [Cognos 8 BI](#) | [Application Developer](#) | [Lotus Certification](#)

[Oracle Certifications](#)

[9i DBA](#) | [9i Internet Application Developer](#) | [OCA](#) | [10g DBA](#) | [Oracle 11i](#) | [Oracle 11g](#)

Latest Version

We are constantly reviewing our products. New material is added and old material is revised. Free updates are available for 90 days after the purchase. You should check your member zone at Pass4Side and update 3-4 days before the scheduled exam date.

Feedback

If you spot a possible improvement then please let us know. We always interested in improving product quality.

Feedback should be send to [pass4side\(at\)hotmail.com](mailto:pass4side(at)hotmail.com). You should include the following: Exam number, version, page number, question number, and your login Account.

Our experts will answer your mail promptly.

Explanations

This product does not include explanations at the moment. If you are interested in providing explanations for this exam, please contact [pass4side\(at\)hotmail.com](mailto:pass4side(at)hotmail.com).

1. What will be upgraded as a result of this command?

```
upgrade ftp://ftpuser@10.1.2.3//upgrade/IPS-K9-r-1.1-a-5.1-1.pkg
```

- A. recovery partition
- B. application partition
- C. both application and recovery partitions immediately
- D. both application and recovery partitions at the next scheduled automatic IDSM update

Answer: A

2. On a Cisco Catalyst 6500 Series Switch, how many physical links can be aggregated into an EtherChannel group?

- A. 4
- B. 8
- C. 16
- D. 32

Answer: B

3. How would you configure a NAM to monitor and report the most heavily viewed sections of a website?

- A. Create a separate domain name or virtual server IP address for each section of the site. Add each domain name or IP address to the NAM application protocol directory.
- B. Enable regular-expression pattern matching. Define application protocol filters based on regular expressions that match the desired URLs.
- C. Enable URL monitoring. Define each desired URL as an application in the protocol directory.
- D. Use SPAN or VACLs to capture upper-layer protocol data from the web servers. Use a third-party application to parse the stored capture files.

Answer: C

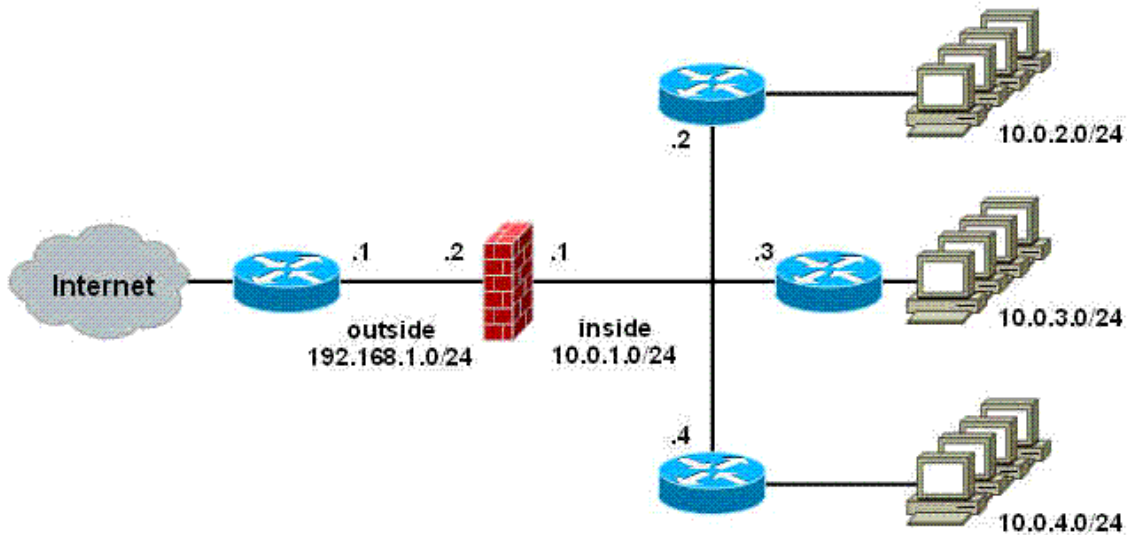
4. How can you configure the NAM to view a list of all switches that are sending NDE packets?

- A. Enter the command `sh data-source nde`.
- B. Configure Cisco Discovery Protocol to detect all switches on the network.
- C. Launch NetFlow Listening Mode from the Cisco Traffic Analyzer application.

D. The NAM will automatically detect NDE broadcasts and add each switch to the NetFlow device table.

Answer: C

5. Refer to the exhibit. Which FWSM command allows routing of TCP traffic from the Internet to network 10.0.3.0/24?



A. `access-list inside permit tcp 192.168.1.0 255.255.255.0 10.0.3.0 255.255.255.0`

B. `route inside 10.0.3.0 255.255.255.0 10.0.1.3`

C. `route outside 10.0.3.0 255.255.255.0 10.0.1.3`

D. `route inside 0 0 10.0.1.3`

Answer: B

6. Which command must be issued to activate the FWSM firewall context?

A. `allocate-vlan`

B. `config-url`

C. `limit-resource`

D. `map-interface`

Answer: B

7. The IDSM management-interface IP address can be configured from which prompt?

A. `IDSM(config)#`

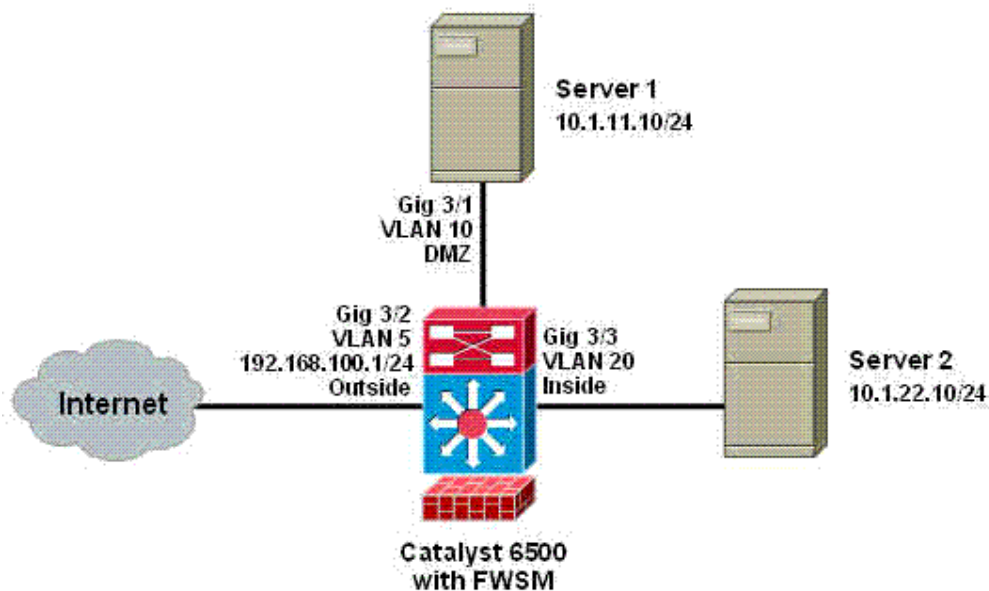
B. `IDSM(config-hos-net)#`

C. `IDSM(config-mgmt)#`

D. IDSM(config-if)#

Answer: B

8. Refer to the exhibit. Which command would you use on the FWSM to provide a default route from Servers 1 and 2 to the Internet?



A. route inside 0 0 192.168.100.1

B. route inside 10.1.0.0 255.255.0.0 192.168.1.1

C. route outside 0 0 192.168.100.1

D. route outside 10.1.0.0 255.255.0.0 192.168.1.1

Answer: C

9. Which statement is correct regarding Layer 3 EtherChannels?

A. They are STP-aware.

B. They cannot be automatically negotiated.

C. Multiple EtherChannels are used between a pair of switches.

D. Multiple EtherChannels between two switches create an STP loop.

Answer: C

10. What is the effect of executing the command intrusion-detection module 5 management-port access-vlan 10 on an IDSM?

- A. allows the IDSM to be managed by devices in VLAN 10
- B. configures the IDSM to monitor traffic from VLAN 10 in in-line mode
- C. allows the IDSM to perform blocking actions on devices in VLAN 10
- D. configures the IDSM to monitor traffic from VLAN 10 in promiscuous mode

Answer: A



Pass4side.com was founded in 2003. The safer,easier way to help you pass any IT Certification exams . We provide high quality IT Certification exams practice questions and answers(Q&A). Especially [Adobe](#), [Apple](#), [Citrix](#), [Comptia](#), [EMC](#), [HP](#), [HuaWei](#), [LPI](#), [Nortel](#), [Oracle](#), [SUN](#), [Vmware](#) and so on. And help you pass any IT Certification exams at the first try.

English	http://www.pass4side.com
Chinese (Traditional)	http:// www.pass4side.net
Chinese (Simplified)	http:// www.pass4side.cn